
























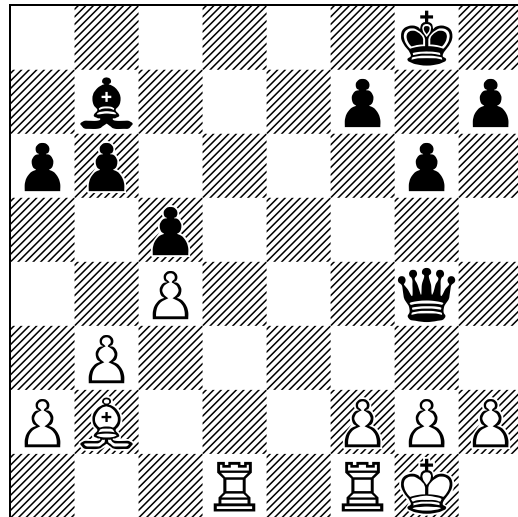
Diagrammen maken met het Smart-font

- Het smart-font (=lettertype) is duidelijk en mooi.
- Elke letter in dit font correspondeert met een schaakstuk op een zwart of wit veld.
- Voordeel is dat je snel een diagram kan aanpassen.
- Stellingen met veel stukken zijn op deze manier echter niet snel te maken!

| | | | | | | | | | | | | |
|---|---|---|---|---|---|---|---|---|---|---|---|---|
| a | b | c | d | e | f | g | h | j | i | k | l | m |
|  |  |  |  |  |  |  |  |  |  |  |  |  |
| A | B | C | D | E | F | G | H | I | J | K | L | M |
|  |  |  |  |  |  |  |  |  |  |  |  |  |

Hoofdletter M is dus een leeg wit veld!!

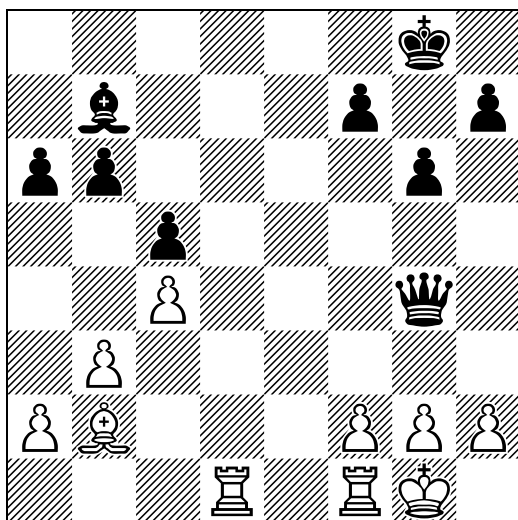
MmMmMmfm
 mcmMmama
 agMmMmam
 mMgMmMmM
 MmAmMmem
 mAmMmMmM
 AIMmMGAG



Links zien we een diagram met een gewoon lettertype en rechts met *Smart*.

De diagrammen zijn *Word-tabellen*, precies op maat gemaakt voor de grootte van het lettertype.

Het is handig als je iets weet van tabellen in Word (grootte, positionering, tekstomloop, randen, etc.).



● Dit is een kolom, waar ook tekst in kan staan

Rechts van dit diagram zit ook nog een kolom, maar die zie je niet omdat de randen niet zichtbaar zijn.

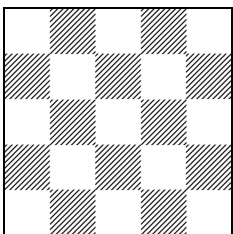
Ik gebruik die normaliter voor de zwarte stip, maar er kan tekst staan.

Selecteer een tabel en klik dan op rechtermuis en je ziet *tabeleigenschappen*. Daarin kan je de positie van de tabel aangeven (links-midden-rechts), maar ook of je wel of geen tekst om het diagram wil hebben. In het diagram hierboven heb ik gekozen voor ‘rondom’. Je kan daar ook de rij, kolom en cel aanpassen. Ook kan je er wel / niet een rand omheen plaatsen.

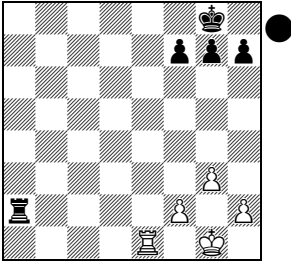
In de loop der jaren heb ik diagrammen in allerlei maten, combinaties en grootte gemaakt, zodat je dat niet allemaal hoeft uit te zoeken 😊

Bijvoorbeeld bordjes met 4 x 4 velden, maar ook 5 x 5 en 6 x 6. Twee, drie of vier diagrammen onder elkaar of naast elkaar of een a4-tje met 4, 6, 8, 9 of 12 diagrammen. Ik heb ze in alle soorten en maten.

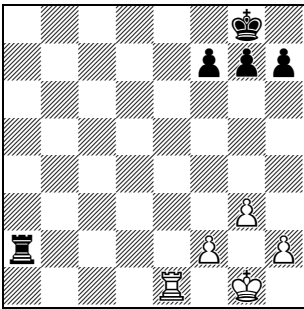
Zie de voorbeelden hieronder.



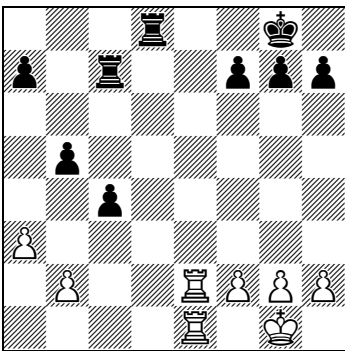
5 x 5



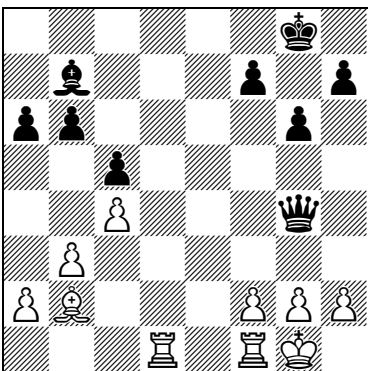
12 pt (3,41 cm)



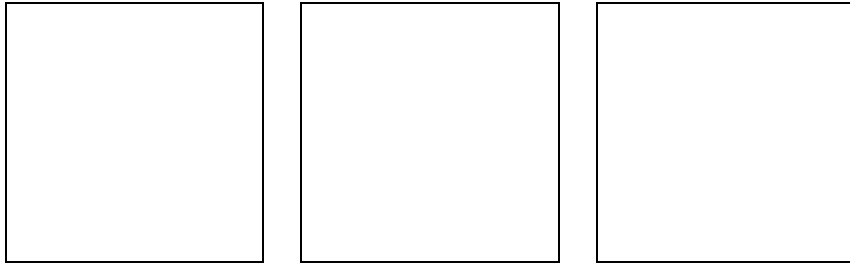
14 pt (4cm)



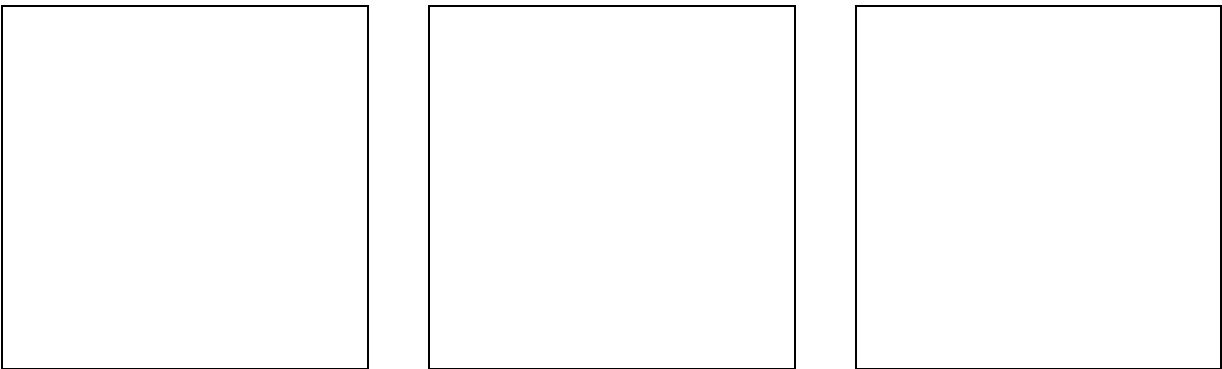
16 pt (4,55 cm)



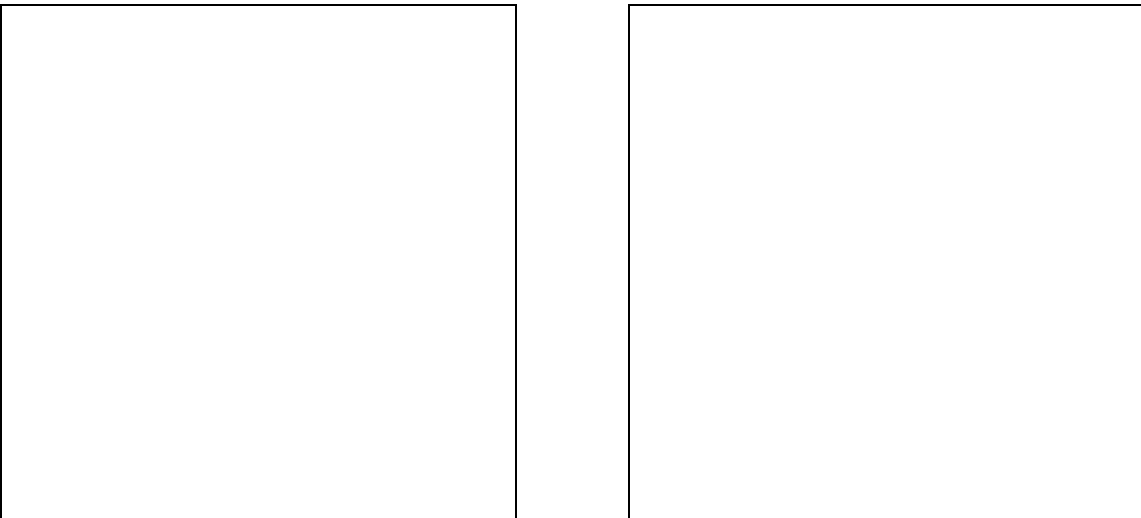
17 pt (4,84)



Leeg (12 pt = 3,41 cm)



Leeg (17 pt = 4,84 cm)



Leeg (24 pt = 6,81 cm)

De zwarte puntjes staan in het lettertype 'Wingdings' dat op vrijwel alle computers is geïnstalleerd.



16



18



20



22



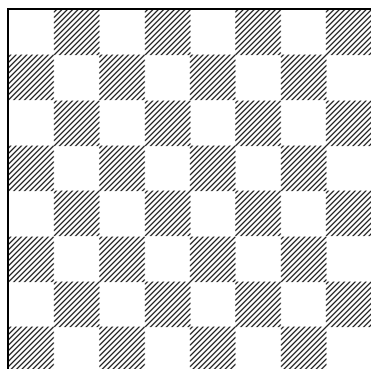
24



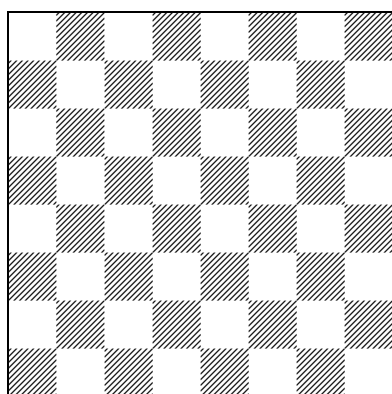
26



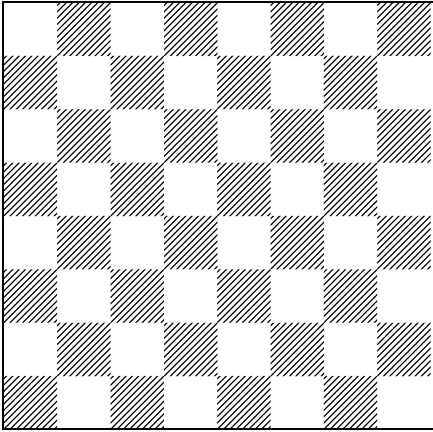
28



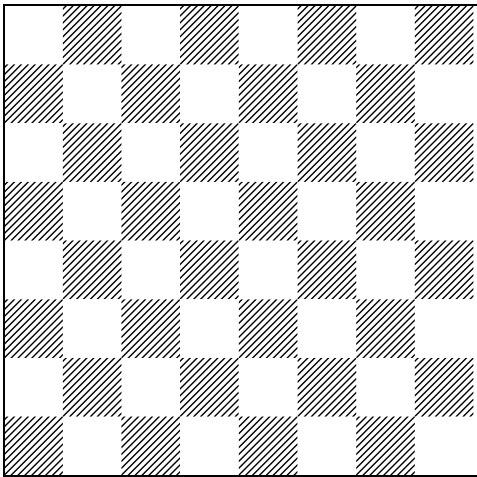
17 pt (4,84 cm)



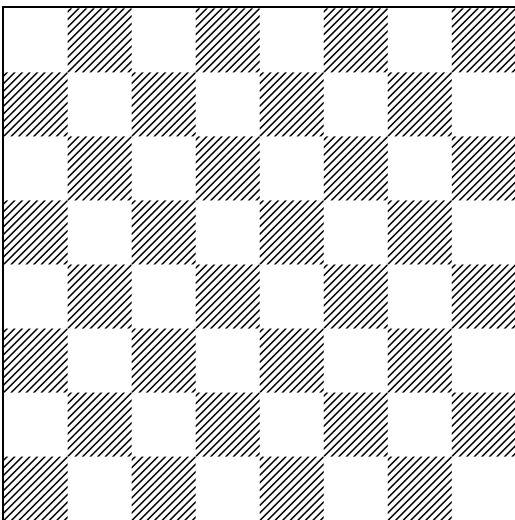
18 pt (5,1 cm)



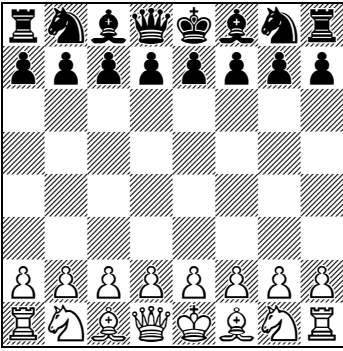
20 pt (5,7 cm)



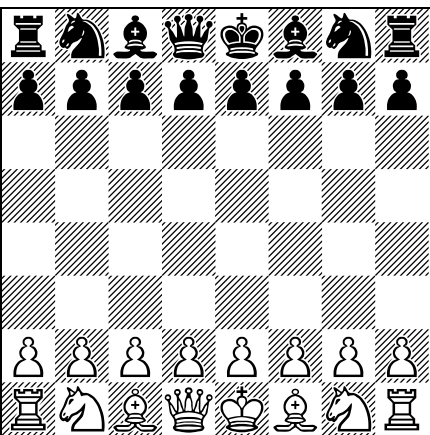
22 pt (6,22 cm)



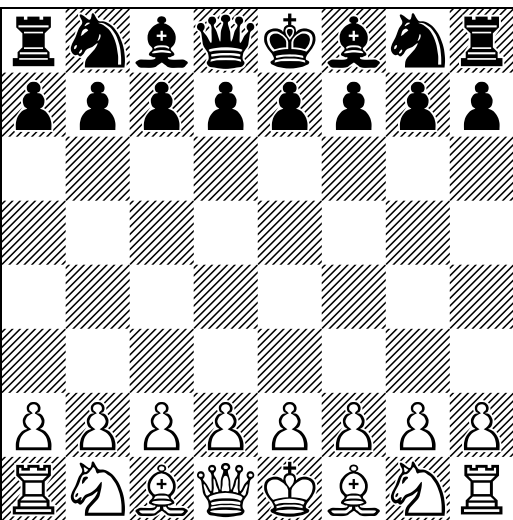
24 pt (6,81 cm)



Beginstelling (16 pt)

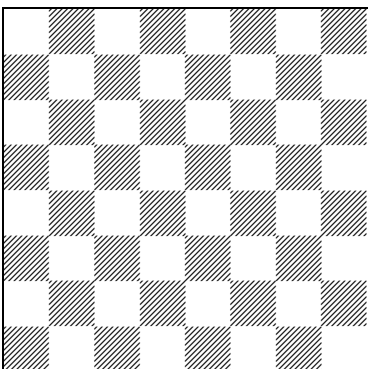
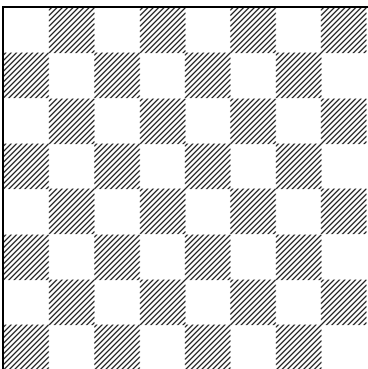
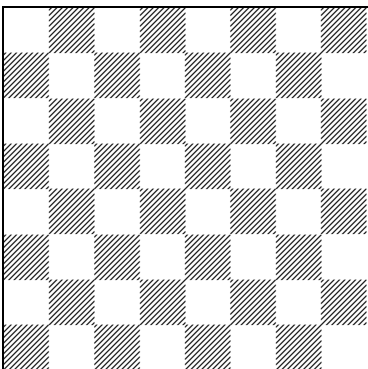
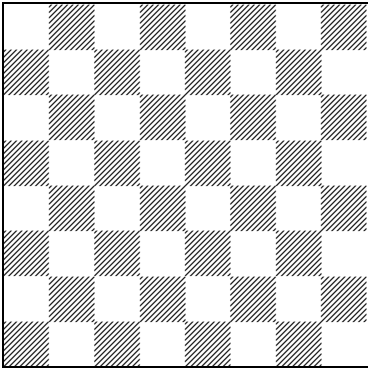


Beginstelling 20 pt (5,7 cm)

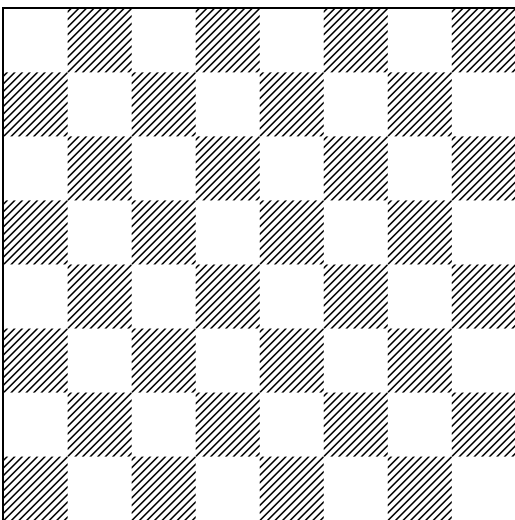
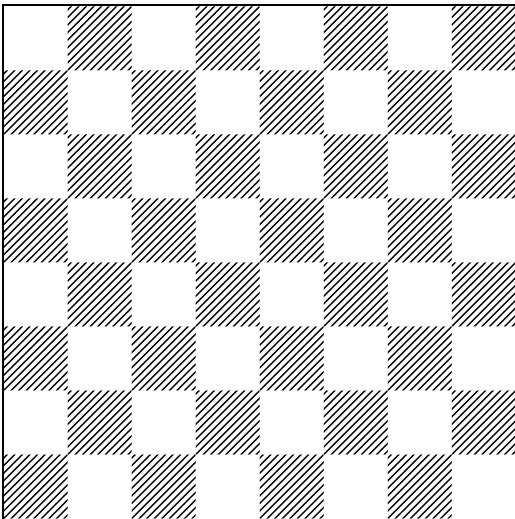
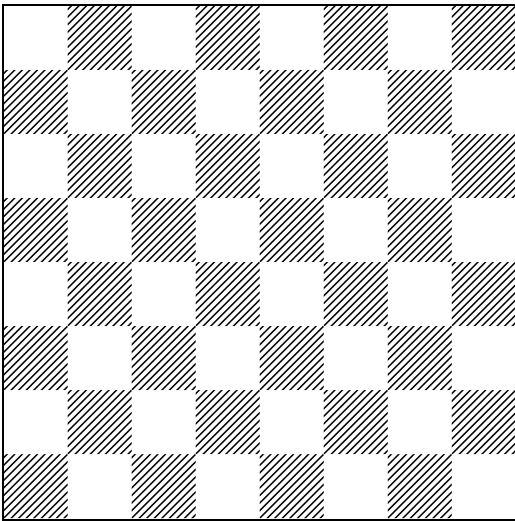


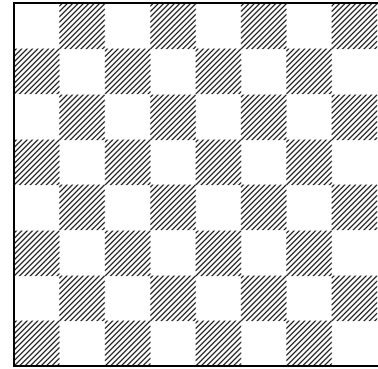
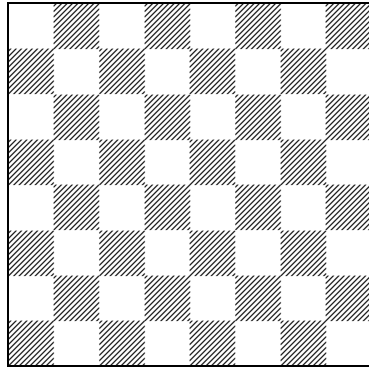
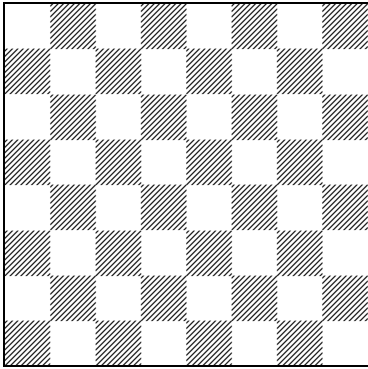
Beginstelling (24 pt)

4 x 17 pt onder elkaar



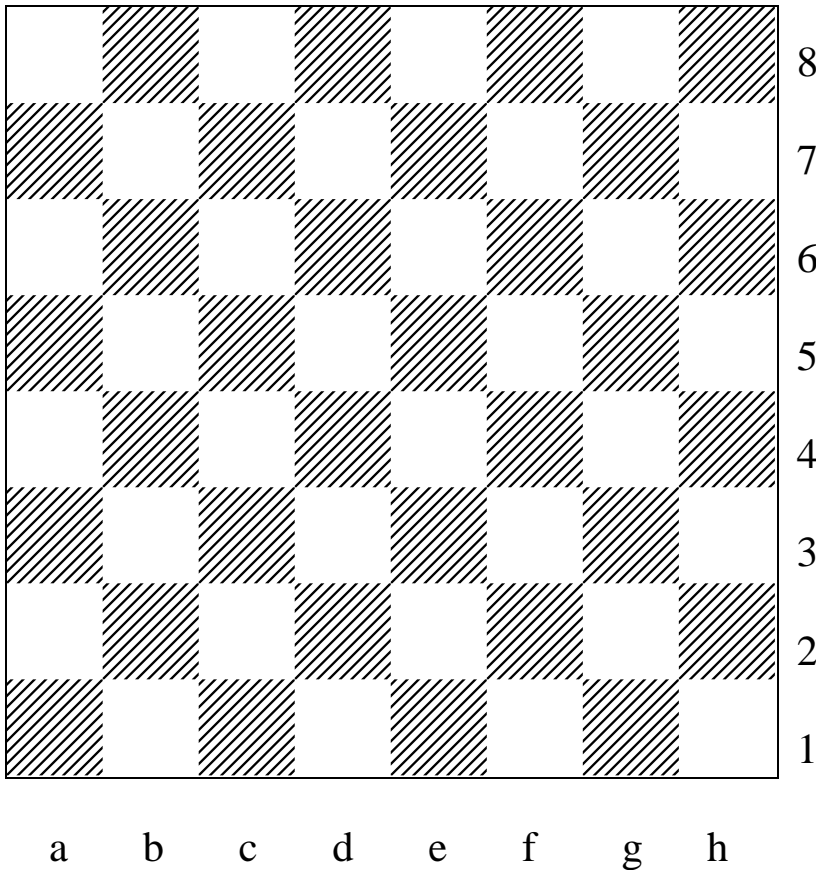
3x 24 pt onder elkaar





3 x 17 pt (naast elkaar)

Kopieer je dit rijtje 2, 3 of 4 keer onder elkaar (met minimaal een regel ertussen!) dan heb je 6-9-12 opgaven op één a4-tje. Probeer maar eens!



*Wil je het Smart-font en dit document in Word? Mail naar **chessed@telfort.nl***